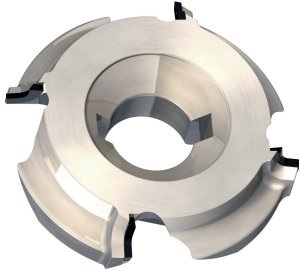


A2090



Frese per bordatrice in diamante per raggiare per macchine holz-her 1833 con air system
Diamond edge rounding cutters for holz-her 1833 with air system

MATERIALE LAVORATO / MATERIALS
 mdf, truciolare
chipboard, mdf, chipboard

IMPIEGO / FUNCTION
 bordatrice
edge banding machine

DESCRIZIONE / DESCRIPTION

Per raggiare bordi incollati di legni massicci, legni teneri o duri e materie plastiche su macchine bordatrici HOLZ-HER 1833 con AIR SYSTEM.

For rounding solid wood, veneer and plastic edge bands for HOLZHER 1833 WITH AIR SYSTEM.

DATI TECNICI / TECHNICAL DATA

ART	COD	DRW	D	B	Z	d	D2	ROT	A	H	RIF	R
A2090	001	88929	72.5	19	4	20	61	Dx Rh	4	4	HOLZ-HER	0.5
A2090	002	88930	72.5	19	4	20	61	Dx Rh	4	4	HOLZ-HER	1
A2090	003	88931	72.5	19	4	20	61	Dx Rh	4	4	HOLZ-HER	1.5
A2090	004	88932	72.5	19	4	20	61	Dx Rh	4	4	HOLZ-HER	2
A2090	005	88933	72.5	19	4	20	61	Dx Rh	4	4	HOLZ-HER	2.5
A2090	006	88934	72.5	19	4	20	61	Dx Rh	4	4	HOLZ-HER	3
A2090	007	88935	72.5	19	4	20	61	Sx Lh	4	4	HOLZ-HER	0.5
A2090	008	88936	72.5	19	4	20	61	Sx Lh	4	4	HOLZ-HER	1
A2090	009	88937	72.5	19	4	20	61	Sx Lh	4	4	HOLZ-HER	1.5
A2090	010	88938	72.5	19	4	20	61	Sx Lh	4	4	HOLZ-HER	2
A2090	011	88939	72.5	19	4	20	61	Sx Lh	4	4	HOLZ-HER	2.5
A2090	012	88940	72.5	19	4	20	61	Sx Lh	4	4	HOLZ-HER	3