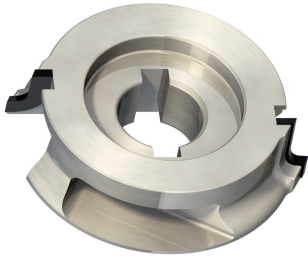


# A2089



Frese per bordatrice in diamante per raggiare per macchine holz-her fr201 con air system  
*Diamond edge rounding cutters for holz-her fr201 with air system*

**MATERIALE LAVORATO / MATERIALS**  
 mdf, truciolare  
*chipboard, mdf, chipboard*

**IMPIEGO / FUNCTION**  
 bordatrice  
*edge banding machine*

## DESCRIZIONE / DESCRIPTION

Per raggiare bordi incollati di legni massicci, legni teneri o duri e materie plastiche su macchine bordatrici HOLZ-HER FR201 CON AIR SYSTEM

*For rounding solid wood, veneer and plastic edge bands for HOLZHER FR201 with AIR SYSTEM*

## DATI TECNICI / TECHNICAL DATA

ART	COD	DRW	D	B	Z	d	D2	ROT	A	H	RIF	R	T	E	G	M	N	O	W	Q	U
A2089	001	88917	57	19	4	16	50	Dx Rh	2	4	HOLZ-HER	0.5	GFR2	1.2	1.3	1.4	1.5	1.6	1.7	1.8	1.9
A2089	002	88918	57	19	4	16	50	Dx Rh	2	4	HOLZ-HER	1	GFR3	1.2	1.3	1.2	1.2	1.2	1.3	1.4	1.5
A2089	003	88919	57	19	4	16	50	Dx Rh	2	4	HOLZ-HER	1.5		0	0	0	0	0	0	0	0
A2089	004	88920	57	19	4	16	50	Dx Rh	2	4	HOLZ-HER	2		0	0	0	0	0	0	0	0
A2089	005	88921	57	19	4	16	50	Dx Rh	2	4	HOLZ-HER	2.5		0	0	0	0	0	0	0	0
A2089	006	88922	57	19	4	16	50	Dx Rh	2	4	HOLZ-HER	3		0	0	0	0	0	0	0	0
A2089	007	88923	57	19	4	16	50	Sx Lh	2	4	HOLZ-HER	0.5		0	0	0	0	0	0	0	0
A2089	008	88924	57	19	4	16	50	Sx Lh	2	4	HOLZ-HER	1		0	0	0	0	0	0	0	0
A2089	009	88925	57	19	4	16	50	Sx Lh	2	4	HOLZ-HER	1.5		0	0	0	0	0	0	0	0
A2089	010	88926	57	19	4	16	50	Sx Lh	2	4	HOLZ-HER	2		0	0	0	0	0	0	0	0
A2089	011	88927	57	19	4	16	50	Sx Lh	2	4	HOLZ-HER	2.5		0	0	0	0	0	0	0	0
A2089	012	88928	57	19	4	16	50	Sx Lh	2	4	HOLZ-HER	3		0	0	0	0	0	0	0	0