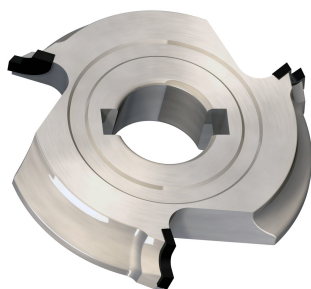


## A2087



Frese per bordatrice in diamante per raggiare  
per macchine holz-her 1832 con air system  
*Diamond edge rounding cutters for holz-her  
1832 with air system*

### MATERIALE LAVORATO / MATERIALS

mdf, truciolare  
*chipboard, mdf, chipboard*

### IMPIEGO / FUNCTION

bordatrice  
*edge banding machine*

### DESCRIZIONE / DESCRIPTION

Per raggiare bordi incollati di legni massicci, legni teneri o duri e materie plastiche su macchine bordatrici  
HOLZ-HER 1832 con AIR SYSTEM

*For rounding solid wood, veneer and plastic edge bands for HOLZHER 1832 with AIR SYSTEM*

### DATI TECNICI / TECHNICAL DATA

ART	COD	DRW	D	B	Z	d	D2	ROT	A	H	RIF	R
A2087	001	88893	58.7	12	3	16	50	Dx Rh	3	4	HOLZ-HER	0.5
A2087	002	88894	58.7	12	3	16	50	Dx Rh	3	4	HOLZ-HER	1
A2087	003	88895	58.7	12	3	16	50	Dx Rh	3	4	HOLZ-HER	1.5
A2087	004	88896	58.7	12	3	16	50	Dx Rh	3	4	HOLZ-HER	2
A2087	005	88897	58.7	12	3	16	50	Dx Rh	3	4	HOLZ-HER	2.5
A2087	006	88898	58.7	12	3	16	50	Sx Lh	3	4	HOLZ-HER	3
A2087	007	88899	58.7	12	3	16	50	Sx Lh	3	4	HOLZ-HER	0.5
A2087	008	88900	58.7	12	3	16	50	Sx Lh	3	4	HOLZ-HER	1
A2087	009	88901	58.7	12	3	16	50	Sx Lh	3	4	HOLZ-HER	1.5
A2087	010	88902	58.7	12	3	16	50	Sx Lh	3	4	HOLZ-HER	2
A2087	011	88903	58.7	12	3	16	50	Sx Lh	3	4	HOLZ-HER	2.5
A2087	012	88904	58.7	12	3	16	50	Sx Lh	3	4	HOLZ-HER	3