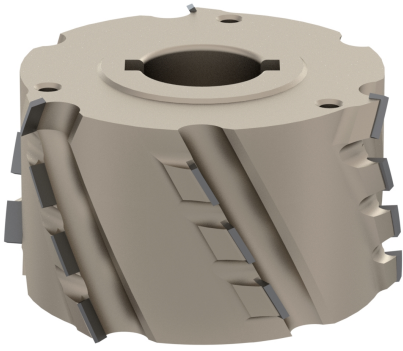


# A2071

Frese per bordatrice in diamante d100  
placchetta h4,5 30°

*Diamond joint cutter d100 pcd tips h4,5 mm  
axial 30°*



## MATERIALE LAVORATO / MATERIALS

mdf, truciolare  
*chipboard, mdf, chipboard*

## IMPIEGO / FUNCTION

bordatrice  
*edge banding machine*

## DESCRIZIONE / DESCRIPTION

Frese bordatrici per rettifica ad elica diametro 100 in diamante con placchetta H4.5 mm e angolo assiale di taglio 30°

*Diamond jointing cutter diameter 100 with helicoidal wings PCD H4.5 mm axial 30°*

## DATI TECNICI / TECHNICAL DATA

ART	COD	DRW	D	B	Z	d	ROT	P	A	H	RIF	ALFA
A2071	001	88567	100	35	2+2	30	Dx Rh	1	12	4.5	IMA / BRANDT	30
A2071	002	88568	100	35	3+3	30	Dx Rh	1	12	4.5	IMA / BRANDT	30
A2071	003	88569	100	45	2+2	30	Dx Rh	1	12	4.5		30
A2071	004	88570	100	45	3+3	30	Dx Rh	1	18	4.5		30
A2071	005	88571	100	45	2+2	30	Dx Rh	1	12	4.5		30
A2071	006	88572	100	45	3+3	30	Dx Rh	1	18	4.5		30
A2071	007	88573	100	45	2+2	30	Dx Rh	7	12	4.5	BRANDT	30
A2071	008	88574	100	45	3+3	30	Dx Rh	7	18	4.5	BRANDT	30
A2071	009	88575	100	45	2+2	30	Dx Rh	6	12	4.5	HEBROCK/EBM/BRANDT AMBITION 1110 F	30
A2071	010	88576	100	45	3+3	30	Dx Rh	6	18	4.5	HEBROCK/EBM/BRANDT AMBITION 1110 F	30
A2071	011	88577	100	45	2+2	30	Dx Rh	3	12	4.5		30
A2071	012	88578	100	45	3+3	30	Dx Rh	3	18	4.5		30
A2071	013	88579	100	48	2+2	25	Dx Rh	1	12	4.5		30
A2071	014	88580	100	48	3+3	25	Dx Rh	1	18	4.5		30
A2071	015	88581	100	48	2+2	30	Dx Rh	2	12	4.5	HOLZ-HER UP TO 2008 - SCM	30
A2071	016	88582	100	48	3+3	30	Dx Rh	2	18	4.5	HOLZ-HER UP TO 2008 - SCM	30
A2071	017	88583	100	48	2+2	30	Dx Rh	7	12	4.5	BRANDT-IMA-SCM K360 K560 - IDM - BIESSE	30
A2071	018	88584	100	48	3+3	30	Dx Rh	7	18	4.5	BRANDT-IMA-SCM K360 K560 - IDM - BIESSE	30
A2071	019	88585	100	48	2+2	30	Dx Rh	2	12	4.5	BRANDT-IMA-SCM K360 K560 - IDM - BIESSE	30
A2071	020	88586	100	48	3+3	30	Dx Rh	2	18	4.5	BRANDT-IMA-SCM K360 K560 - IDM - BIESSE	30
A2071	021	88587	100	55	2+2	30	Dx Rh	1	14	4.5		30
A2071	022	88588	100	55	3+3	30	Dx Rh	1	21	4.5		30
A2071	023	88589	100	55	2+2	30	Dx Rh	2	14	4.5	HOLZ-HER UP TO 2008 - SCM	30
A2071	024	88590	100	55	3+3	30	Dx Rh	2	21	4.5	HOLZ-HER UP TO 2008 - SCM	30
A2071	025	88591	100	55	2+2	30	Dx Rh	7	14	4.5	BRANDT-IMA-SCM K360 K560 - IDM - BIESSE	30
A2071	026	88592	100	55	3+3	30	Dx Rh	7	21	4.5	BRANDT-IMA-SCM K360 K560 - IDM - BIESSE	30
A2071	027	88593	100	65	2+2	30	Dx Rh	1	16	4.5		30
A2071	028	88594	100	65	3+3	30	Dx Rh	1	24	4.5		30

ART	COD	DRW	D	B	Z	d	ROT	P	A	H	RIF	ALFA
A2071	029	88595	100	65	2+2	30	Dx Rh	3	16	4.5	BIESSE AKRON 600 AKRON 800	30
A2071	030	88596	100	65	3+3	30	Dx Rh	3	24	4.5	BIESSE AKRON 600 AKRON 800	30
A2071	031	88597	100	65	2+2	30	Dx Rh	7	16	4.5	BRANDT-IMA-SCM K360 K560 - IDM - BIESSE	30
A2071	032	88598	100	65	3+3	30	Dx Rh	7	24	4.5	BRANDT-IMA-SCM K360 K560 - IDM - BIESSE	30
A2071	033	88599	100	65	2+2	30	Dx Rh	2	16	4.5	HOLZ-HER UP TO 2008 - SCM	30
A2071	034	88600	100	65	3+3	30	Dx Rh	2	24	4.5	HOLZ-HER UP TO 2008 - SCM	30
A2071	035	88601	100	65	2+2	20	Dx Rh	2	16	4.5	CHEISA	30
A2071	036	88602	100	65	3+3	20	Dx Rh	2	24	4.5	CHEISA	30
A2071	037	88603	100	65	2+2	30	Dx Rh	2	16	4.5	HOLZ-HER	30
A2071	038	88604	100	65	3+3	30	Dx Rh	2	24	4.5	HOLZ-HER	30
A2071	039	88605	100	65	2+2	30	Dx Rh	2	16	4.5	HOLZ-HER	30
A2071	040	88606	100	65	3+3	30	Dx Rh	2	24	4.5	HOLZ-HER	30
A2071	041	88607	100	35	2+2	30	Sx Lh	1	12	4.5	IMA / BRANDT	30
A2071	042	88608	100	35	3+3	30	Sx Lh	1	12	4.5	IMA / BRANDT	30
A2071	043	88609	100	45	2+2	30	Sx Lh	1	12	4.5		30
A2071	044	88610	100	45	3+3	30	Sx Lh	1	18	4.5		30
A2071	045	88611	100	45	2+2	30	Sx Lh	1	12	4.5		30
A2071	046	88612	100	45	3+3	30	Sx Lh	1	18	4.5		30
A2071	047	88613	100	45	2+2	30	Sx Lh	7	12	4.5	BRANDT	30
A2071	048	88614	100	45	3+3	30	Sx Lh	7	18	4.5	BRANDT	30
A2071	049	88615	100	45	2+2	30	Sx Lh	6	12	4.5	HEBROCK/EBM/BRANDT AMBITION 1110 F	30
A2071	050	88616	100	45	3+3	30	Sx Lh	6	18	4.5	HEBROCK/EBM/BRANDT AMBITION 1110 F	30
A2071	051	88617	100	45	2+2	30	Sx Lh	3	12	4.5		30
A2071	052	88618	100	45	3+3	30	Sx Lh	3	18	4.5		30
A2071	053	88619	100	48	2+2	25	Sx Lh	1	12	4.5		30
A2071	054	88620	100	48	3+3	25	Sx Lh	1	18	4.5		30
A2071	055	88621	100	48	2+2	30	Sx Lh	2	12	4.5	HOLZ-HER UP TO 2008 - SCM	30
A2071	056	88622	100	48	3+3	30	Sx Lh	2	18	4.5	HOLZ-HER UP TO 2008 - SCM	30
A2071	057	88623	100	48	2+2	30	Sx Lh	7	12	4.5	BRANDT-IMA-SCM K360 K560 - IDM - BIESSE	30
A2071	058	88624	100	48	3+3	30	Sx Lh	7	18	4.5	BRANDT-IMA-SCM K360 K560 - IDM - BIESSE	30
A2071	059	88625	100	48	2+2	30	Sx Lh	2	12	4.5	BRANDT-IMA-SCM K360 K560 - IDM - BIESSE	30
A2071	060	88626	100	48	3+3	30	Sx Lh	2	18	4.5	BRANDT-IMA-SCM K360 K560 - IDM - BIESSE	30
A2071	061	88627	100	55	2+2	30	Sx Lh	1	14	4.5		30
A2071	062	88628	100	55	3+3	30	Sx Lh	1	21	4.5		30
A2071	063	88629	100	55	2+2	30	Sx Lh	2	14	4.5	HOLZ-HER UP TO 2008 - SCM	30
A2071	064	88630	100	55	3+3	30	Sx Lh	2	21	4.5	HOLZ-HER UP TO 2008 - SCM	30
A2071	065	88631	100	55	2+2	30	Sx Lh	7	14	4.5	BRANDT-IMA-SCM K360 K560 - IDM - BIESSE	30
A2071	066	88632	100	55	3+3	30	Sx Lh	7	21	4.5	BRANDT-IMA-SCM K360 K560 - IDM - BIESSE	30
A2071	067	88633	100	65	2+2	30	Sx Lh	1	16	4.5		30
A2071	068	88634	100	65	3+3	30	Sx Lh	1	24	4.5		30
A2071	069	88635	100	65	2+2	30	Sx Lh	3	16	4.5	BIESSE AKRON 600 AKRON 800	30
A2071	070	88636	100	65	3+3	30	Sx Lh	3	24	4.5	BIESSE AKRON 600 AKRON 800	30
A2071	071	88637	100	65	2+2	30	Sx Lh	7	16	4.5	BRANDT-IMA-SCM K360 K560 - IDM - BIESSE	30

ART	COD	DRW	D	B	Z	d	ROT	P	A	H	RIF	ALFA
A2071	072	88638	100	65	3+3	30	Sx Lh	7	24	4.5	BRANDT-IMA-SCM K360 K560 - IDM - BIESSE	30
A2071	073	88639	100	65	2+2	30	Sx Lh	2	16	4.5	HOLZ-HER UP TO 2008 - SCM	30
A2071	074	88640	100	65	3+3	30	Sx Lh	2	24	4.5	HOLZ-HER UP TO 2008 - SCM	30
A2071	075	88641	100	65	2+2	20	Sx Lh	2	16	4.5	CHEISA	30
A2071	076	88642	100	65	3+3	20	Sx Lh	2	24	4.5	CHEISA	30
A2071	077	88643	100	65	2+2	30	Sx Lh	2	16	4.5	HOLZ-HER	30
A2071	078	88644	100	65	3+3	30	Sx Lh	2	24	4.5	HOLZ-HER	30
A2071	079	88645	100	65	2+2	30	Sx Lh	2	16	4.5	HOLZ-HER	30
A2071	080	88646	100	65	3+3	30	Sx Lh	2	24	4.5	HOLZ-HER	30