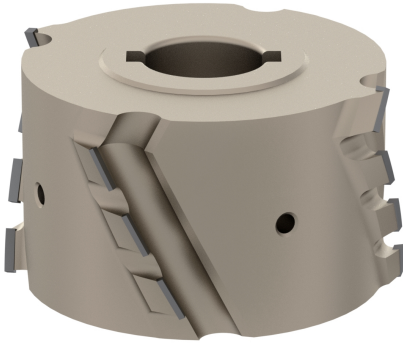


# A2070

Frese per bordatrice in diamante d100  
placchetta h2,5 30°

*Diamond joint cutter d100 pcd tips h2,5 mm  
axial 30°*



## MATERIALE LAVORATO / MATERIALS

mdf, truciolare  
*chipboard, mdf, chipboard*

## IMPIEGO / FUNCTION

bordatrice  
*edge banding machine*

## DESCRIZIONE / DESCRIPTION

Frese bordatrici per rettifica diametro 100 ad elica in diamante con placchetta H2.5 mm e angolo assiale di taglio 30°

*Diamond jointing cutter diameter 100 with helicoidal wings PCD H2.5 mm axial 30°*

## DATI TECNICI / TECHNICAL DATA

| ART   | COD | DRW   | D   | B  | Z   | d  | ROT   | P | A  | H   | RIF  | ALFA |
|-------|-----|-------|-----|----|-----|----|-------|---|----|-----|--|------|
| A2070 | 001 | 88487 | 100 | 35 | 2+2 | 30 | Dx Rh | 1 | 12 | 2.5 | IMA / BRANDT                               | 30   |
| A2070 | 002 | 88488 | 100 | 35 | 3+3 | 30 | Dx Rh | 1 | 12 | 2.5 | IMA / BRANDT                               | 30   |
| A2070 | 003 | 88489 | 100 | 45 | 2+2 | 30 | Dx Rh | 1 | 12 | 2.5 |  | 30   |
| A2070 | 004 | 88490 | 100 | 45 | 3+3 | 30 | Dx Rh | 1 | 18 | 2.5 |  | 30   |
| A2070 | 005 | 88491 | 100 | 45 | 2+2 | 30 | Dx Rh | 1 | 12 | 2.5 |  | 30   |
| A2070 | 006 | 88492 | 100 | 45 | 3+3 | 30 | Dx Rh | 1 | 18 | 2.5 |  | 30   |
| A2070 | 007 | 88493 | 100 | 45 | 2+2 | 30 | Dx Rh | 7 | 12 | 2.5 | BRANDT                                     | 30   |
| A2070 | 008 | 88494 | 100 | 45 | 3+3 | 30 | Dx Rh | 7 | 18 | 2.5 | BRANDT                                     | 30   |
| A2070 | 009 | 88495 | 100 | 45 | 2+2 | 30 | Dx Rh | 6 | 12 | 2.5 | HEBROCK/EBM/BRANDT<br>AMBITION 1110 F      | 30   |
| A2070 | 010 | 88496 | 100 | 45 | 3+3 | 30 | Dx Rh | 6 | 18 | 2.5 | HEBROCK/EBM/BRANDT<br>AMBITION 1110 F      | 30   |
| A2070 | 011 | 88497 | 100 | 45 | 2+2 | 30 | Dx Rh | 3 | 12 | 2.5 |  | 30   |
| A2070 | 012 | 88498 | 100 | 45 | 3+3 | 30 | Dx Rh | 3 | 18 | 2.5 |  | 30   |
| A2070 | 013 | 88499 | 100 | 48 | 2+2 | 25 | Dx Rh | 1 | 12 | 2.5 |  | 30   |
| A2070 | 014 | 88500 | 100 | 48 | 3+3 | 25 | Dx Rh | 1 | 18 | 2.5 |  | 30   |
| A2070 | 015 | 88501 | 100 | 48 | 2+2 | 30 | Dx Rh | 2 | 12 | 2.5 | HOLZ-HER UP TO 2008 - SCM                  | 30   |
| A2070 | 016 | 88502 | 100 | 48 | 3+3 | 30 | Dx Rh | 2 | 18 | 2.5 | HOLZ-HER UP TO 2008 - SCM                  | 30   |
| A2070 | 017 | 88503 | 100 | 48 | 2+2 | 30 | Dx Rh | 7 | 12 | 2.5 | BRANDT-IMA-SCM K360<br>K560 - IDM - BIESSE | 30   |
| A2070 | 018 | 88504 | 100 | 48 | 3+3 | 30 | Dx Rh | 7 | 18 | 2.5 | BRANDT-IMA-SCM K360<br>K560 - IDM - BIESSE | 30   |
| A2070 | 019 | 88505 | 100 | 48 | 2+2 | 30 | Dx Rh | 2 | 12 | 2.5 | BRANDT-IMA-SCM K360<br>K560 - IDM - BIESSE | 30   |
| A2070 | 020 | 88506 | 100 | 48 | 3+3 | 30 | Dx Rh | 2 | 18 | 2.5 | BRANDT-IMA-SCM K360<br>K560 - IDM - BIESSE | 30   |
| A2070 | 021 | 88507 | 100 | 55 | 2+2 | 30 | Dx Rh | 1 | 14 | 2.5 |  | 30   |
| A2070 | 022 | 88508 | 100 | 55 | 3+3 | 30 | Dx Rh | 1 | 21 | 2.5 |  | 30   |
| A2070 | 023 | 88509 | 100 | 55 | 2+2 | 30 | Dx Rh | 2 | 14 | 2.5 | HOLZ-HER UP TO 2008 - SCM                  | 30   |
| A2070 | 024 | 88510 | 100 | 55 | 3+3 | 30 | Dx Rh | 2 | 21 | 2.5 | HOLZ-HER UP TO 2008 - SCM                  | 30   |
| A2070 | 025 | 88511 | 100 | 55 | 2+2 | 30 | Dx Rh | 7 | 14 | 2.5 | BRANDT-IMA-SCM K360<br>K560 - IDM - BIESSE | 30   |
| A2070 | 026 | 88512 | 100 | 55 | 3+3 | 30 | Dx Rh | 7 | 21 | 2.5 | BRANDT-IMA-SCM K360<br>K560 - IDM - BIESSE | 30   |
| A2070 | 027 | 88513 | 100 | 65 | 2+2 | 30 | Dx Rh | 1 | 16 | 2.5 |  | 30   |
| A2070 | 028 | 88514 | 100 | 65 | 3+3 | 30 | Dx Rh | 1 | 24 | 2.5 |  | 30   |

| ART   | COD | DRW   | D   | B  | Z   | d  | ROT   | P | A  | H   | RIF                                     | ALFA |
|-------|-----|-------|-----|----|-----|----|-------|---|----|-----|---|------|
| A2070 | 029 | 88515 | 100 | 65 | 2+2 | 30 | Dx Rh | 3 | 16 | 2.5 | BIESSE AKRON 600 AKRON 800              | 30   |
| A2070 | 030 | 88516 | 100 | 65 | 3+3 | 30 | Dx Rh | 3 | 24 | 2.5 | BIESSE AKRON 600 AKRON 800              | 30   |
| A2070 | 031 | 88517 | 100 | 65 | 2+2 | 30 | Dx Rh | 7 | 16 | 2.5 | BRANDT-IMA-SCM K360 K560 - IDM - BIESSE | 30   |
| A2070 | 032 | 88518 | 100 | 65 | 3+3 | 30 | Dx Rh | 7 | 24 | 2.5 | BRANDT-IMA-SCM K360 K560 - IDM - BIESSE | 30   |
| A2070 | 033 | 88519 | 100 | 65 | 2+2 | 30 | Dx Rh | 2 | 16 | 2.5 | HOLZ-HER UP TO 2008 - SCM               | 30   |
| A2070 | 034 | 88520 | 100 | 65 | 3+3 | 30 | Dx Rh | 2 | 24 | 2.5 | HOLZ-HER UP TO 2008 - SCM               | 30   |
| A2070 | 035 | 88521 | 100 | 65 | 2+2 | 20 | Dx Rh | 2 | 16 | 2.5 | CHEISA                                  | 30   |
| A2070 | 036 | 88522 | 100 | 65 | 3+3 | 20 | Dx Rh | 2 | 24 | 2.5 | CHEISA                                  | 30   |
| A2070 | 037 | 88523 | 100 | 65 | 2+2 | 30 | Dx Rh | 2 | 16 | 2.5 | HOLZ-HER                                | 30   |
| A2070 | 038 | 88524 | 100 | 65 | 3+3 | 30 | Dx Rh | 2 | 24 | 2.5 | HOLZ-HER                                | 30   |
| A2070 | 039 | 88525 | 100 | 65 | 2+2 | 30 | Dx Rh | 2 | 16 | 2.5 | HOLZ-HER                                | 30   |
| A2070 | 040 | 88526 | 100 | 65 | 3+3 | 30 | Dx Rh | 2 | 24 | 2.5 | HOLZ-HER                                | 30   |
| A2070 | 041 | 88527 | 100 | 35 | 2+2 | 30 | Sx Lh | 1 | 12 | 2.5 | IMA / BRANDT                            | 30   |
| A2070 | 042 | 88528 | 100 | 35 | 3+3 | 30 | Sx Lh | 1 | 12 | 2.5 | IMA / BRANDT                            | 30   |
| A2070 | 043 | 88529 | 100 | 45 | 2+2 | 30 | Sx Lh | 1 | 12 | 2.5 |   | 30   |
| A2070 | 044 | 88530 | 100 | 45 | 3+3 | 30 | Sx Lh | 1 | 18 | 2.5 |   | 30   |
| A2070 | 045 | 88531 | 100 | 45 | 2+2 | 30 | Sx Lh | 1 | 12 | 2.5 |   | 30   |
| A2070 | 046 | 88532 | 100 | 45 | 3+3 | 30 | Sx Lh | 1 | 18 | 2.5 |   | 30   |
| A2070 | 047 | 88533 | 100 | 45 | 2+2 | 30 | Sx Lh | 7 | 12 | 2.5 | BRANDT                                  | 30   |
| A2070 | 048 | 88534 | 100 | 45 | 3+3 | 30 | Sx Lh | 7 | 18 | 2.5 | BRANDT                                  | 30   |
| A2070 | 049 | 88535 | 100 | 45 | 2+2 | 30 | Sx Lh | 6 | 12 | 2.5 | HEBROCK/EBM/BRANDT AMBITION 1110 F      | 30   |
| A2070 | 050 | 88536 | 100 | 45 | 3+3 | 30 | Sx Lh | 6 | 18 | 2.5 | HEBROCK/EBM/BRANDT AMBITION 1110 F      | 30   |
| A2070 | 051 | 88537 | 100 | 45 | 2+2 | 30 | Sx Lh | 3 | 12 | 2.5 |   | 30   |
| A2070 | 052 | 88538 | 100 | 45 | 3+3 | 30 | Sx Lh | 3 | 18 | 2.5 |   | 30   |
| A2070 | 053 | 88539 | 100 | 48 | 2+2 | 25 | Sx Lh | 1 | 12 | 2.5 |   | 30   |
| A2070 | 054 | 88540 | 100 | 48 | 3+3 | 25 | Sx Lh | 1 | 18 | 2.5 |   | 30   |
| A2070 | 055 | 88541 | 100 | 48 | 2+2 | 30 | Sx Lh | 2 | 12 | 2.5 | HOLZ-HER UP TO 2008 - SCM               | 30   |
| A2070 | 056 | 88542 | 100 | 48 | 3+3 | 30 | Sx Lh | 2 | 18 | 2.5 | HOLZ-HER UP TO 2008 - SCM               | 30   |
| A2070 | 057 | 88543 | 100 | 48 | 2+2 | 30 | Sx Lh | 7 | 12 | 2.5 | BRANDT-IMA-SCM K360 K560 - IDM - BIESSE | 30   |
| A2070 | 058 | 88544 | 100 | 48 | 3+3 | 30 | Sx Lh | 7 | 18 | 2.5 | BRANDT-IMA-SCM K360 K560 - IDM - BIESSE | 30   |
| A2070 | 059 | 88545 | 100 | 48 | 2+2 | 30 | Sx Lh | 2 | 12 | 2.5 | BRANDT-IMA-SCM K360 K560 - IDM - BIESSE | 30   |
| A2070 | 060 | 88546 | 100 | 48 | 3+3 | 30 | Sx Lh | 2 | 18 | 2.5 | BRANDT-IMA-SCM K360 K560 - IDM - BIESSE | 30   |
| A2070 | 061 | 88547 | 100 | 55 | 2+2 | 30 | Sx Lh | 1 | 14 | 2.5 |   | 30   |
| A2070 | 062 | 88548 | 100 | 55 | 3+3 | 30 | Sx Lh | 1 | 21 | 2.5 |   | 30   |
| A2070 | 063 | 88549 | 100 | 55 | 2+2 | 30 | Sx Lh | 2 | 14 | 2.5 | HOLZ-HER UP TO 2008 - SCM               | 30   |
| A2070 | 064 | 88550 | 100 | 55 | 3+3 | 30 | Sx Lh | 2 | 21 | 2.5 | HOLZ-HER UP TO 2008 - SCM               | 30   |
| A2070 | 065 | 88551 | 100 | 55 | 2+2 | 30 | Sx Lh | 7 | 14 | 2.5 | BRANDT-IMA-SCM K360 K560 - IDM - BIESSE | 30   |
| A2070 | 066 | 88552 | 100 | 55 | 3+3 | 30 | Sx Lh | 7 | 21 | 2.5 | BRANDT-IMA-SCM K360 K560 - IDM - BIESSE | 30   |
| A2070 | 067 | 88553 | 100 | 65 | 2+2 | 30 | Sx Lh | 1 | 16 | 2.5 |   | 30   |
| A2070 | 068 | 88554 | 100 | 65 | 3+3 | 30 | Sx Lh | 1 | 24 | 2.5 |   | 30   |
| A2070 | 069 | 88555 | 100 | 65 | 2+2 | 30 | Sx Lh | 3 | 16 | 2.5 | BIESSE AKRON 600 AKRON 800              | 30   |
| A2070 | 070 | 88556 | 100 | 65 | 3+3 | 30 | Sx Lh | 3 | 24 | 2.5 | BIESSE AKRON 600 AKRON 800              | 30   |
| A2070 | 071 | 88557 | 100 | 65 | 2+2 | 30 | Sx Lh | 7 | 16 | 2.5 | BRANDT-IMA-SCM K360 K560 - IDM - BIESSE | 30   |

| ART   | COD | DRW   | D   | B  | Z   | d  | ROT   | P | A  | H   | RIF  | ALFA |
|-------|-----|-------|-----|----|-----|----|-------|---|----|-----|--|------|
| A2070 | 072 | 88558 | 100 | 65 | 3+3 | 30 | Sx Lh | 7 | 24 | 2.5 | BRANDT-IMA-SCM K360<br>K560 - IDM - BIESSE | 30   |
| A2070 | 073 | 88559 | 100 | 65 | 2+2 | 30 | Sx Lh | 2 | 16 | 2.5 | HOLZ-HER UP TO 2008 - SCM                  | 30   |
| A2070 | 074 | 88560 | 100 | 65 | 3+3 | 30 | Sx Lh | 2 | 24 | 2.5 | HOLZ-HER UP TO 2008 - SCM                  | 30   |
| A2070 | 075 | 88561 | 100 | 65 | 2+2 | 20 | Sx Lh | 2 | 16 | 2.5 | CHEISA                                     | 30   |
| A2070 | 076 | 88562 | 100 | 65 | 3+3 | 20 | Sx Lh | 2 | 24 | 2.5 | CHEISA                                     | 30   |
| A2070 | 077 | 88563 | 100 | 65 | 2+2 | 30 | Sx Lh | 2 | 16 | 2.5 | HOLZ-HER                                   | 30   |
| A2070 | 078 | 88564 | 100 | 65 | 3+3 | 30 | Sx Lh | 2 | 24 | 2.5 | HOLZ-HER                                   | 30   |
| A2070 | 079 | 88565 | 100 | 65 | 2+2 | 30 | Sx Lh | 2 | 16 | 2.5 | HOLZ-HER                                   | 30   |
| A2070 | 080 | 88566 | 100 | 65 | 3+3 | 30 | Sx Lh | 2 | 24 | 2.5 | HOLZ-HER                                   | 30   |