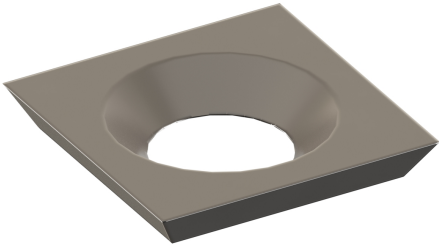


A0540

Rasanti quadrati in hw (hm integrale)

Hw (integral tungsten carbide) square spurs



DESCRIZIONE / DESCRIPTION

Coltellini quadrati con foro svasato per alloggiamento della testa della vite a scomparsa.

HW (integral tungsten carbide) squared inserts with countersunk hole for housing the hidden screw . Suitable for soft , hard and glued wood.



DATI TECNICI / TECHNICAL DATA

ART	COD	DRW	Z	K	L	H
A0540	001	3579	4	2	14	14
A0540	005	3577	4	1.5	10.5	10.5
A0540	006	36239	2	1.5	14	7