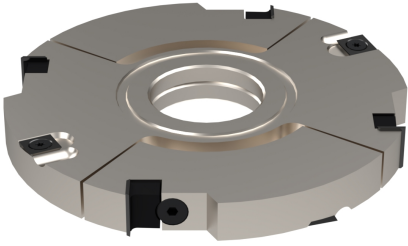


## A0353

Teste portacoltelli per incastri regolabili con  
anelli spessore 20-39,5

*Adjus. insert grooving cutters thickness 20-39,5*



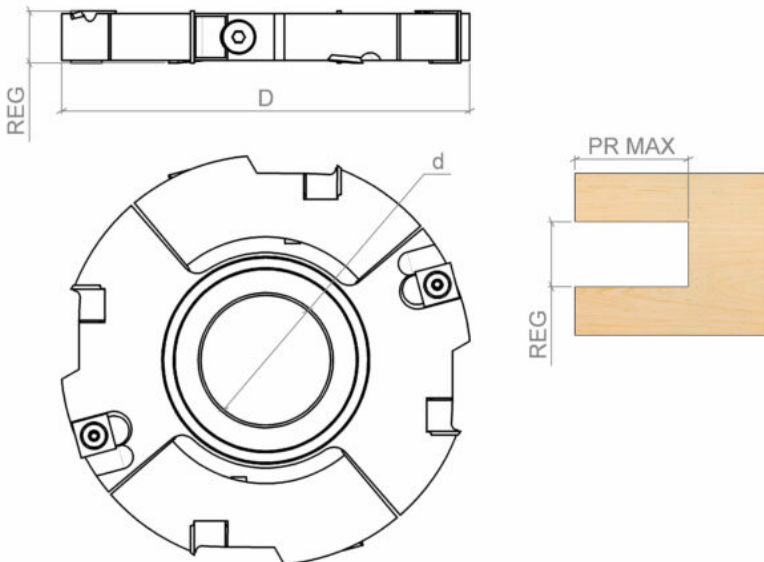
### IMPIEGO / FUNCTION

scorniatrice, toupie  
*moulder, spindle moulder*

### DESCRIZIONE / DESCRIPTION

Testa con n.4 coltellini reversibili in HW (Hm integrale) e n.4 rasanti in HW (Hm integrale), posizionati 2 per ogni fianco dell'utensile. Mediante anelli in dotazione è possibile regolare lo spessore degli incastri.


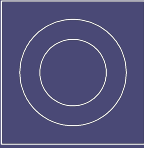
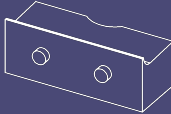
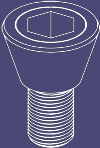
*Cutter with n.4 HW (integral tungsten carbide) reversible inserts and n.4 HW (integral tungsten carbide) spurs, 2 at every side of the tool. Grooves height adjustment is possible by distance rings included*




### DATI TECNICI / TECHNICAL DATA

ART	COD	DRW	D	Z	d	RI	REG	ROT	PR MAX
A0353	002	27994	160	4	30-35-40-50	4	20-39.5	Dx Rh	40
A0353	003	52289	180	4	30-35-40-50	4	20-39.5	Dx Rh	50
A0353	001	14458	140	4	30-35-40-50	4	20-39.5	Dx Rh	30

**RICAMBI / SPARE PARTS**

COD.		QTY		QTY		QTY		QTY
A0353.002	A0520.006.3344	4	A0540.001.3579	4	A1057.021.15806	4	A1078.013.15429	4
A0353.003	A0520.006.3344	4	A0540.001.3579	4	A1057.021.15806	4	A1078.013.15429	4
A0353.001	A0520.006.3344	4	A0540.001.3579	4	A1057.021.15806	4	A1078.013.15429	4

COD.		QTY
A0353.002	A1081.005.34356	4
A0353.003	A1081.005.34356	4
A0353.001	A1081.005.34356	4