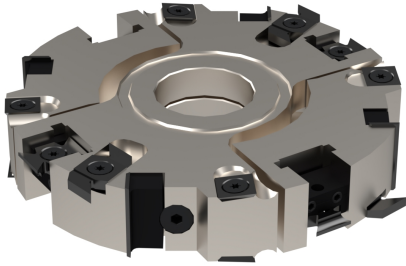


## A0346

Gruppo multilavorazione per incastri, battute, tenoni, perline, spigolature

*Cutterheads set for grooving, rebates, tenons, tongue and groove and chamfers*



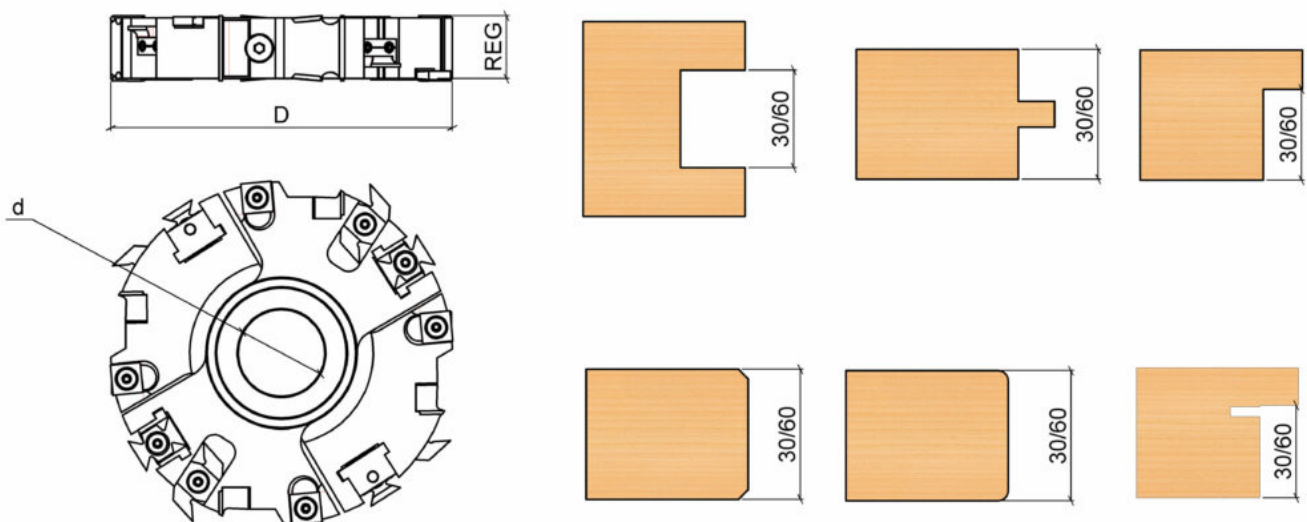
### IMPIEGO / FUNCTION

scorniatrice, toupie  
moulder, spindle moulder

### DESCRIZIONE / DESCRIPTION

Teste con 4 coltelli reversibili in HW (Hm integrale) posizionati 2 per ogni fianco dell'utensile; 4 rasanti, 4 carrellini porta rag./spig e 4 dentelli per canale. Mediante anelli in dotazione è possibile regolare lo spessore degli incastri.


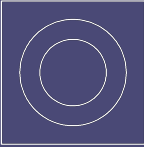

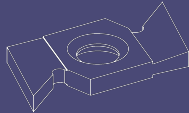
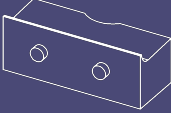
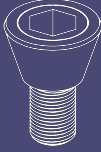

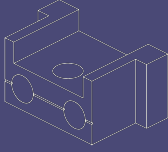
*Cutterheads set with 4 HW (integral tungsten carbide) reversible inserts, positioned 2 on each side of the tool, 4 square spurs, 4 blocks for radius or chamfers and 4 inserts for grooving. Grooving height regulation is possible by distance rings included.*



### DATI TECNICI / TECHNICAL DATA

ART	COD	DRW	D	Z	d	RI	RG	REG	PR MAX	DC
A0346	001	24238	160	4	30-35-40-50	4	4	30-59.5	40	4

## RICAMBI / SPARE PARTS

COD.		QTY		QTY		QTY		QTY
A0346.001	A0520.008.3348	4	A0540.001.3579	8	A0545.003.3585	4	A0546.002.3581	4
COD.		QTY		QTY		QTY		QTY
A0346.001	A1057.012.5425	4	A1078.015.6439	4	A1081.006.34357	16	A1060.010.4141	4