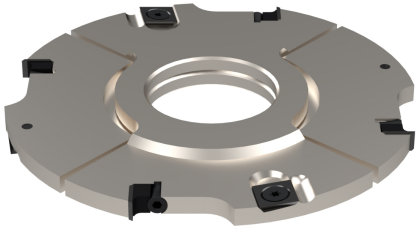


## A0343

Teste portacoltelli per incastri regolabili con anelli spessore 8-15,5

*Adjus. insert grooving cutters thickness 8-15,5*



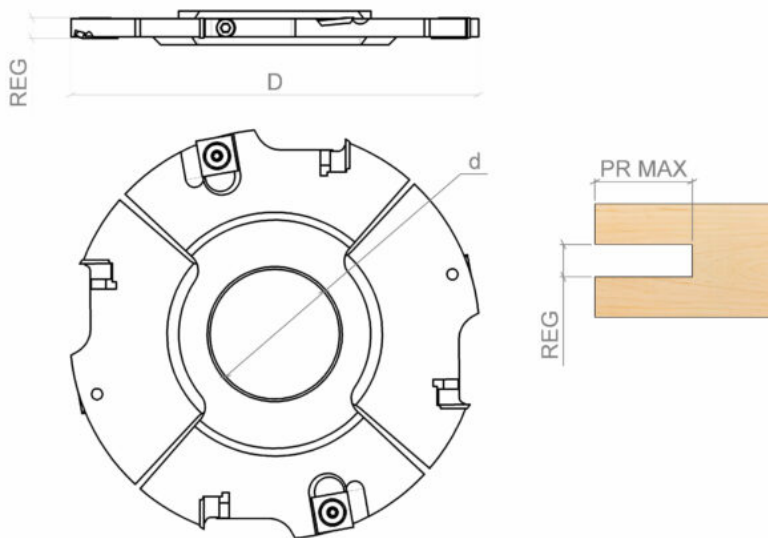
### IMPIEGO / FUNCTION

scorniatrice, toupie  
moulder, spindle moulder

### DESCRIZIONE / DESCRIPTION

Testa con n.4 coltellini reversibili in HW (Hm integrale) e n.4 rasanti in HW (Hm integrale), posizionati 2 per ogni fianco dell'utensile. Mediante anelli in dotazione è possibile regolare lo spessore degli incastri.


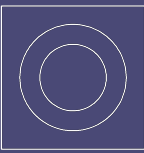
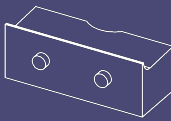
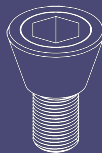
*Cutter with n.4 HW (integral tungsten carbide) reversible inserts and n.4 HW (integral tungsten carbide) spurs, 2 at every side of the tool. Grooves height adjustment is possible by distance rings included*




### DATI TECNICI / TECHNICAL DATA

ART	COD	DRW	D	Z	d	RI	REG	ROT	PR MAX
A0343	001	22631	140	4	30-35-40-50	4	8-15.5	Dx Rh	25
A0343	002	41492	160	4	30-35-40-50	4	8-15.5	Dx Rh	30
A0343	003	19200	180	4	30-35-40-50	4	8-15.5	Dx Rh	40

**RICAMBI / SPARE PARTS**

COD.		QTY		QTY		QTY		QTY
A0343.001	A0520.001.3339	4	A0540.001.3579	4	A1057.020.15998	4	A1078.011.4833	4
A0343.002	A0520.001.3339	4	A0540.001.3579	4	A1057.020.15998	4	A1078.011.4833	4
A0343.003	A0520.001.3339	4	A0540.001.3579	4	A1057.020.15998	4	A1078.011.4833	4

COD.		QTY
A0343.001	A1081.005.34356	4
A0343.002	A1081.005.34356	4
A0343.003	A1081.005.34356	4