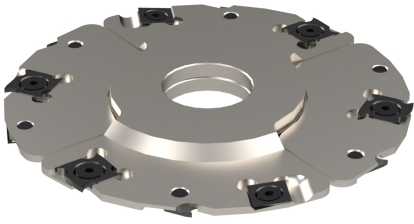


A0340

Teste portacoltelli per incastri regolabili con anelli spessore 4-7,5

Adjus. insert grooving cutters thickness 4-7,5



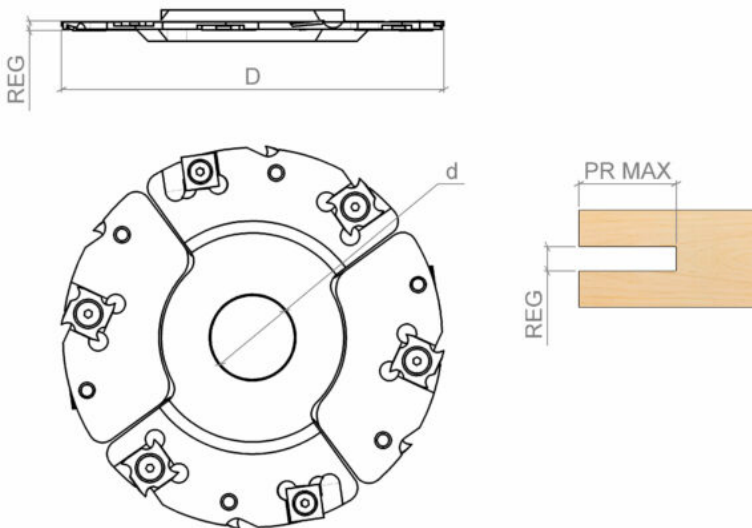
IMPIEGO / FUNCTION

scorniatrice, toupie
moulder, spindle moulder

DESCRIZIONE / DESCRIPTION

Testa con n.8 coltellini reversibili in HW (Hm integrale) e n.4 rasanti in HW (Hm integrale), posizionati 2 per ogni fianco dell'utensile. Mediante anelli in dotazione è possibile regolare lo spessore degli incastri.

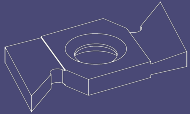
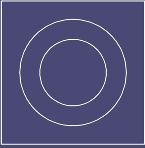

Cutter with n.4 HW (integral tungsten carbide) reversible inserts and n.4 HW (integral tungsten carbide) spurs, 2 at every side of the tool. Being the body thickness smaller than insert thickness it's possible to execute deep grooves.



DATI TECNICI / TECHNICAL DATA

ART	COD	DRW	D	Z	d	RI	REG	PR MAX	DC
A0340	003	13336	160	4	30-35-40-50	4	4-7.5	30	8
A0340	004	15241	180	4	30-35-40-50	4	4-7.5	35	8

RICAMBI / SPARE PARTS

COD.		QTY		QTY		QTY
A0340.003	A0543.001.7488	8	A0540.002.80937	4	A1072.001.37206	12
A0340.004	A0543.001.7488	8	A0540.002.80937	4	A1072.001.37206	12