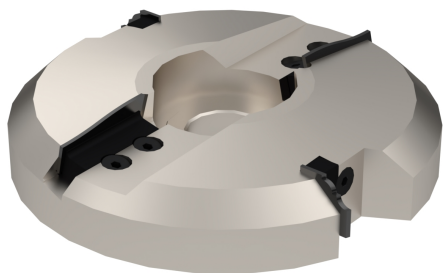


A0316

Testa portacoltelli per piattabanda multiprofilo
Panel rising insert cutters multiprofile



MATERIALE LAVORATO / MATERIALS

legno duro, legno tenero, mdf
*hHrd wood, hHrd wood, mdf, soft
 wood*

IMPIEGO / FUNCTION

squadratrice, toupie
*spindle moulder, squaring
 machine*

INFO ORDINE / ORDER INFO

PREZZO INVARIATO PER ESECUZIONI FORI ALTRE MISURE
 INDICARE LA POSIZIONE DEL LEGNO (SOPRA O SOTTO)
 NELL'ORDINE

*SAME PRICE FOR OTHER BORE SIZES EXECUTION INDICATE
 WOOD POSITION (ABOVE OR UNDER) WHEN ORDERING*

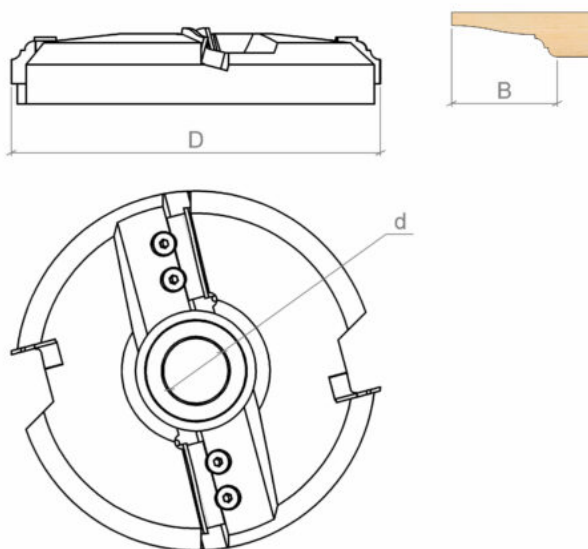
DESCRIZIONE / DESCRIPTION

Testa portacoltelli con coltellini in HW (Hm integrale) da 2 mm. La testa viene fornita con n.1 set di coltelli sagomati a - b - c - d. Adatto per legni teneri e duri.

Cutter with HW(integral tungsten carbide) inserts 2 mm. The cutter is supplied with n.1 set of profiled inserts at choice a - b - c - d. Suitable for hard and soft wood.

VARIANTI / OPTIONS

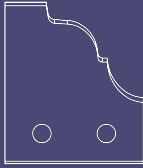
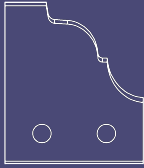
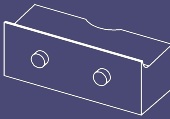
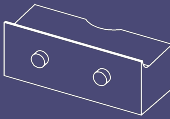
Testa fornita con coltelli per un tipo di profilo a scelta





DATI TECNICI / TECHNICAL DATA

ART	COD	DRW	D	B	LTT	Z	d	ROT	RIF	GT
A0316	001	22011	200	60	30	2+2	30-35-40-50	Dx Rh	LEGNO SOPRA - WOOD ABOVE	Assiale / Axial
A0316	002	52269	200	60	30	2+2	30-35-40-50	Dx Rh	LEGNO SOTTO - WOOD BELOW	Assiale / Axial

RICAMBI / SPARE PARTS

COD.		QTY		QTY		QTY		QTY
A0316.001	A0560.181.22009	2	A0560.026.22010	2	A1057.015.5710	2	A1057.011.11242	2
A0316.002	A0560.181.0	2	A0560.026.0	2	A1057.015.5710	2	A1057.011.11242	2

COD.		QTY		QTY
A0316.001	A1078.014.6284	6	A1077.010.30871	4
A0316.002	A1078.014.6284	6	A1077.010.30871	4