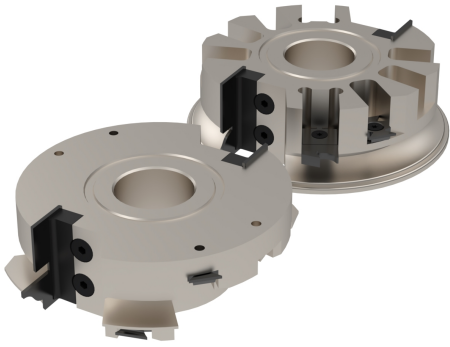


## A0309

Teste portacoltelli per esecuzione profilo e controprofilo

*Profile and counter profile insert cutter set*



**MATERIALE LAVORATO /  
MATERIALS**

legno duro, legno tenero  
*hHrd wood, hHrd wood, soft wood*

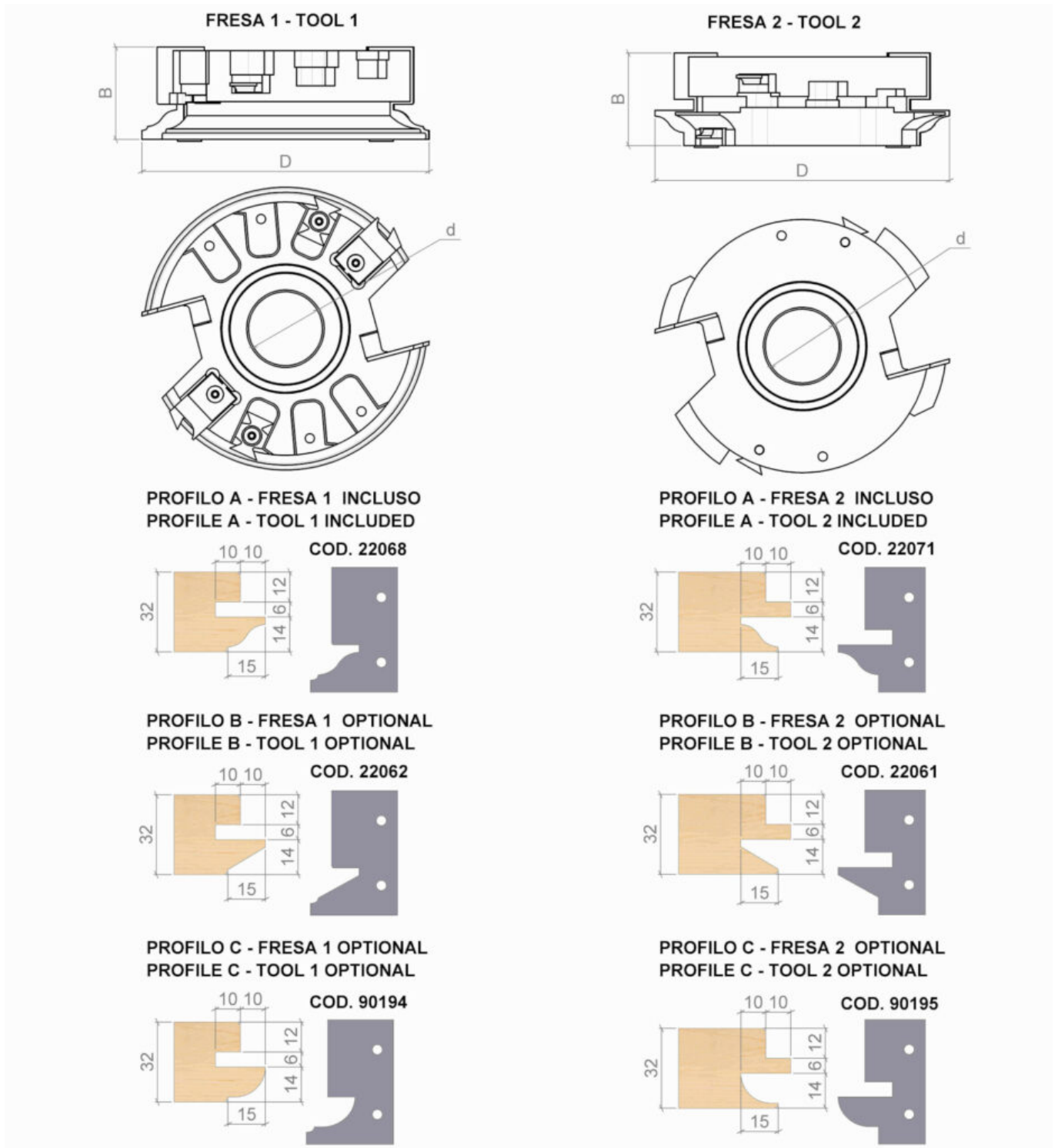
**IMPIEGO / FUNCTION**

scorniciatrice, toupie  
*moulder, spindle moulder*

**DESCRIZIONE / DESCRIPTION**

Gruppo composto da due teste portacoltelli. Una per l'esecuzione del profilo e una per l'esecuzione del controprofilo. Il gruppo puo' realizzare diverse altezze di sportelli.

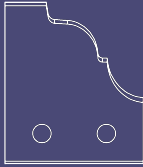
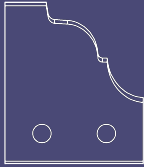
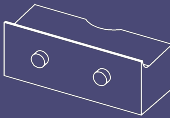

*Set composed by two cutters with HW (integral tungsten carbide) inserts. Suitable for hard and soft wood.*






**DATI TECNICI / TECHNICAL DATA**

ART	COD	DRW	D	B	Z	d	REG	ROT
A0309	100	83880	180	50	4	35-40	20-45	Dx Rh

## RICAMBI / SPARE PARTS

COD.		QTY		QTY		QTY		QTY
A0309.100	A0560.086.22068	2	A0560.086.22071	2	A1057.015.5710	4	A1078.011.14688	4

COD.		QTY		QTY		QTY
A0309.100	A0545.003.3585	6	A1081.006.34357	8	A0546.999.20105	2