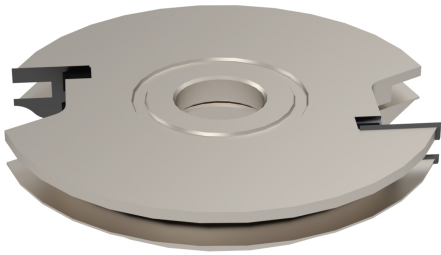


# A0308

Teste portacoltelli per esecuzione profilo e controprofilo

*Profile and counter profile insert cutter set*



## MATERIALE LAVORATO / MATERIALS

legno duro, legno tenero  
hHrd wood, hHrd wood, soft wood

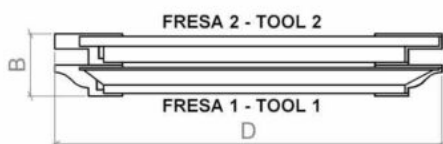
## IMPIEGO / FUNCTION

scorniatrice, toupie  
moulder, spindle moulder

## DESCRIZIONE / DESCRIPTION

Gruppo composto da due teste portacoltelli con coltellini in HW (Hm integrale). La testa n. 1 può essere utilizzata come piattabanda. Il gruppo viene fornito con n.4 set di coltelli sagomati a - b - c - d. Adatto per legni teneri e duri.

*Set composed by two cutters with HW (integral tungsten carbide) inserts. The cutter n.1 can be used also as panel raising. The cutter set is supplied with n.4 sets of profiled inserts a - b - c - d. Suitable for hard and soft wood.*



### PROFILO A - INCLUSO ----- PROFILE A - INCLUDED



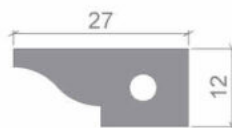
### PROFILO B - OPTIONAL ----- PROFILE B - OPTIONAL --- COD. 10472



### PROFILO C - OPTIONAL ----- PROFILE C - OPTIONAL --- COD. 10473



### FRESA 1 - PROFILO A TOOL 1 - PROFILE A



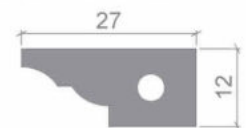
### FRESA 2 - PROFILO A/B/C TOOL 2 - PROFILE A/B/C



### FRESA 1 - PROFILO B TOOL 1 - PROFILE B



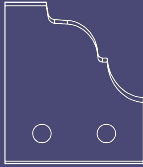
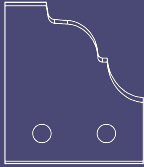
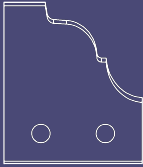
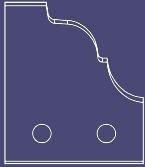
### FRESA 1 - PROFILO C TOOL 1 - PROFILE C

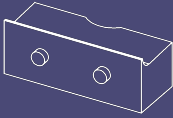



## DATI TECNICI / TECHNICAL DATA

ART	COD	DRW	D	B	Z	d	ROT
A0308	100	51832	150	24	2	30-35-40-50	Dx Rh

## RICAMBI / SPARE PARTS

COD.		QTY		QTY		QTY		QTY
A0308.100	A0550.021.10466	2	A0550.021.10472	2	A0550.021.10479	2	A0550.021.10470	2

COD.		QTY		QTY
A0308.100	A1057.020.15998	4	A1078.011.4833	4