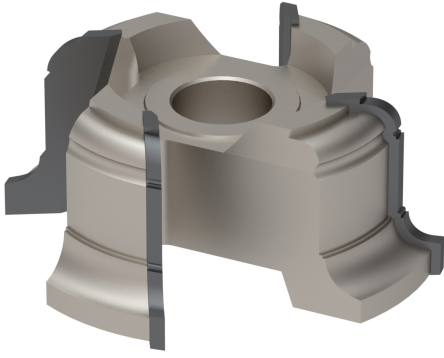


A0005

Frese sagomate saldobrasate
Profiled brazed cutters



MATERIALE LAVORATO / MATERIALS

legno duro, legno tenero
hHrd wood, hHrd wood, soft wood

IMPIEGO / FUNCTION

contornatrice, scorniciatrice,
toupie
*copy-shaping, moulder, spindle
moulder*

INFO ORDINE / ORDER INFO

Indicare la sagoma del legno richiesta attraverso immagine scansionata, disegno Cad, campione legno. Specificare nell'ordine il materiale dei taglienti Hc o Hs ed indicare il senso di rotazione dell'utensile.

Indicate the required wood shape through scanned image, Cad drawing, wood sample. Specify in the order the material of the cutting edge Hc or Hs and indicate the rotation direction of the tool

DESCRIZIONE / DESCRIPTION

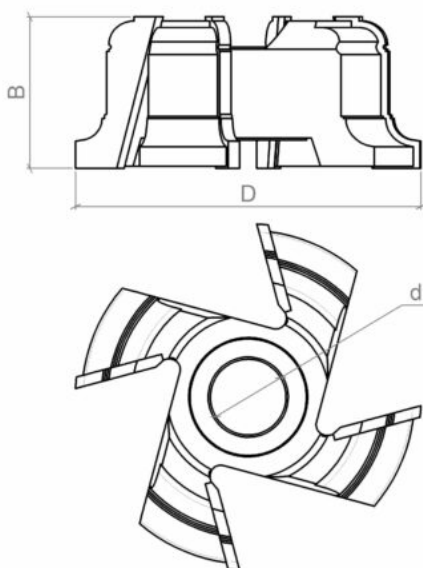
Fresa saldobrasata a 4 taglienti a disegno. I taglienti possono essere paralleli all'asse o inclinati assialmente in base al tipo di sagoma che l'utensile deve riprodurre. E' possibile scegliere tra i taglienti standard in Hc (Hm riportato) adatti per legni duri e abrasivi o quelli in Hs (Hss) per legni teneri e nodosi per cui il prezzo è a preventivo.

Hc (brazed tungsten carbide) Brazed cutter with 4 cutting edges as drawing. The cutting edges (Z) can be parallel to the axis or positioned axially inclined according to the type of shape the tool has to reproduce. It is possible to choose between the standard Hc(Hm reported) cutting edges suitable for hard wood, abrasive or those in Hs (Hss) indicated for soft and knotty woods.

VARIANTI / OPTIONS

Esecuzione frese Z=2: sconto 20%; esecuzione frese Z=3: sconto 10%; esecuzione frese Z=6: incremento 20%;

For Z=2 execution: 20% discount; for Z=3 execution: 10% discount; for Z=6 execution: 20% price increase;



DATI TECNICI / TECHNICAL DATA

ART	COD	D	B	Z	d
A0005	004	120	15	4	30-35-40-50

ART	COD	D	B	Z	d
A0005	005	140	15	4	30-35-40-50
A0005	006	160	15	4	30-35-40-50
A0005	007	180	15	4	30-35-40-50
A0005	008	200	15	4	30-35-40-50
A0005	014	120	20	4	30-35-40-50
A0005	015	140	20	4	30-35-40-50
A0005	016	160	20	4	30-35-40-50
A0005	017	180	20	4	30-35-40-50
A0005	018	200	20	4	30-35-40-50
A0005	024	120	25	4	30-35-40-50
A0005	025	140	25	4	30-35-40-50
A0005	026	160	25	4	30-35-40-50
A0005	027	180	25	4	30-35-40-50
A0005	028	200	25	4	30-35-40-50
A0005	034	120	30	4	30-35-40-50
A0005	035	140	30	4	30-35-40-50
A0005	036	160	30	4	30-35-40-50
A0005	037	180	30	4	30-35-40-50
A0005	038	200	30	4	30-35-40-50
A0005	044	120	35	4	30-35-40-50
A0005	045	140	35	4	30-35-40-50
A0005	046	160	35	4	30-35-40-50
A0005	047	180	35	4	30-35-40-50
A0005	048	200	35	4	30-35-40-50
A0005	054	120	40	4	30-35-40-50
A0005	055	140	40	4	30-35-40-50
A0005	056	160	40	4	30-35-40-50
A0005	057	180	40	4	30-35-40-50
A0005	058	200	40	4	30-35-40-50
A0005	064	120	45	4	30-35-40-50
A0005	065	140	45	4	30-35-40-50
A0005	066	160	45	4	30-35-40-50
A0005	067	180	45	4	30-35-40-50
A0005	068	200	45	4	30-35-40-50
A0005	074	120	50	4	30-35-40-50
A0005	075	140	50	4	30-35-40-50
A0005	076	160	50	4	30-35-40-50
A0005	077	180	50	4	30-35-40-50
A0005	078	200	50	4	30-35-40-50
A0005	084	120	60	4	30-35-40-50
A0005	085	140	60	4	30-35-40-50
A0005	086	160	60	4	30-35-40-50
A0005	087	180	60	4	30-35-40-50
A0005	088	200	60	4	30-35-40-50
A0005	094	120	70	4	30-35-40-50
A0005	095	140	70	4	30-35-40-50
A0005	096	160	70	4	30-35-40-50
A0005	097	180	70	4	30-35-40-50
A0005	098	200	70	4	30-35-40-50
A0005	104	120	80	4	30-35-40-50
A0005	105	140	80	4	30-35-40-50
A0005	106	160	80	4	30-35-40-50
A0005	107	180	80	4	30-35-40-50
A0005	108	200	80	4	30-35-40-50
A0005	114	120	90	4	30-35-40-50
A0005	115	140	90	4	30-35-40-50

ART	COD	D	B	Z	d
A0005	116	160	90	4	30-35-40-50
A0005	117	180	90	4	30-35-40-50
A0005	118	200	90	4	30-35-40-50
A0005	124	120	100	4	30-35-40-50
A0005	125	140	100	4	30-35-40-50
A0005	126	160	100	4	30-35-40-50
A0005	127	180	100	4	30-35-40-50
A0005	128	200	100	4	30-35-40-50
A0005	200	120	120	4	30-35-40-50
A0005	201	140	120	4	30-35-40-50
A0005	202	160	120	4	30-35-40-50
A0005	203	180	120	4	30-35-40-50
A0005	204	200	120	4	30-35-40-50
A0005	205	120	140	4	30-35-40-50
A0005	206	140	140	4	30-35-40-50
A0005	207	160	140	4	30-35-40-50
A0005	208	180	140	4	30-35-40-50
A0005	209	200	140	4	30-35-40-50
A0005	210	120	160	4	30-35-40-50
A0005	211	140	160	4	30-35-40-50
A0005	212	160	160	4	30-35-40-50
A0005	213	180	160	4	30-35-40-50
A0005	214	200	160	4	30-35-40-50
A0005	215	120	180	4	30-35-40-50
A0005	216	140	180	4	30-35-40-50
A0005	217	160	180	4	30-35-40-50
A0005	218	180	180	4	30-35-40-50
A0005	219	200	180	4	30-35-40-50
A0005	220	120	200	4	30-35-40-50
A0005	221	140	200	4	30-35-40-50
A0005	222	160	200	4	30-35-40-50
A0005	223	180	200	4	30-35-40-50
A0005	224	200	200	4	30-35-40-50
A0005	225	120	220	4	30-35-40-50
A0005	226	140	220	4	30-35-40-50
A0005	227	160	220	4	30-35-40-50
A0005	228	180	220	4	30-35-40-50
A0005	229	200	220	4	30-35-40-50
A0005	230	120	240	4	30-35-40-50
A0005	231	140	240	4	30-35-40-50
A0005	232	160	240	4	30-35-40-50
A0005	233	180	240	4	30-35-40-50
A0005	234	200	240	4	30-35-40-50